

# URTEC

**Lightweight Concrete Prefab Houses**

**Patrick.mallat@urtec.com**

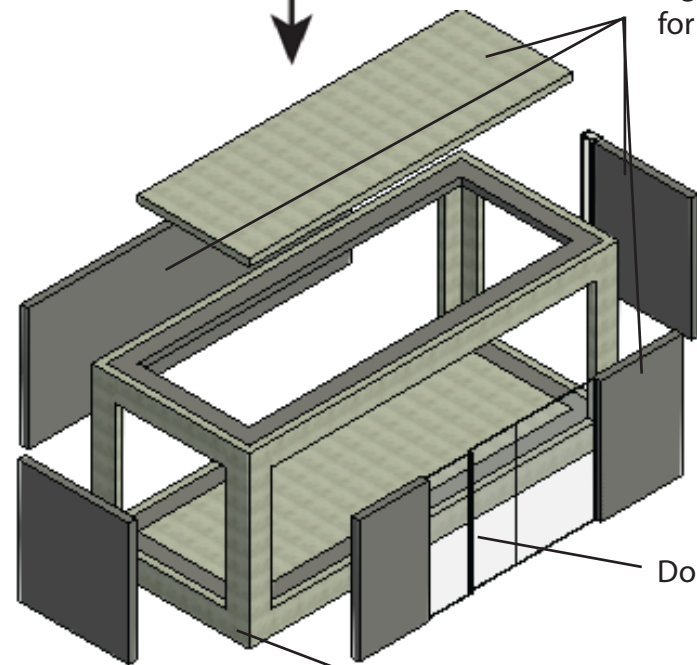
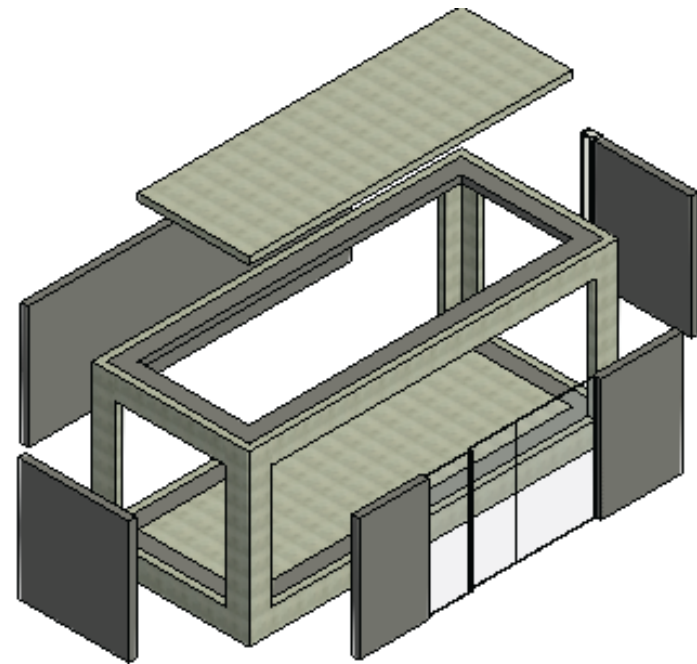
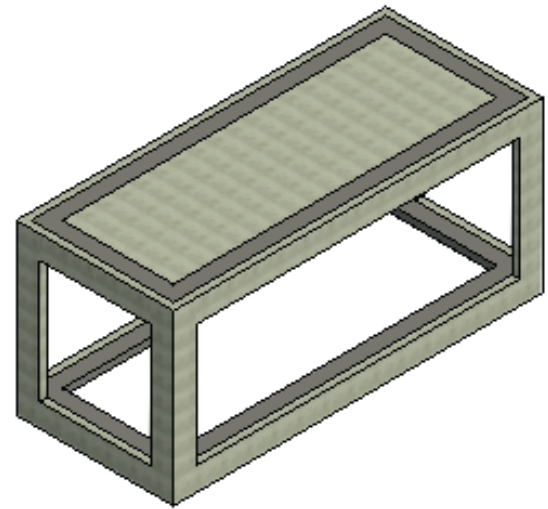
**Tel: +961 3 689 560**

**URTEC** is proud to present "**The Ego Trip**".

A Passive, extendable, modern, modular, state of the art house in concrete and light weight concrete.

This house is equiped with the latest technology for renewable energy, saving you money on electrical, heating and cooling bills. Your home will keep expanding by adding modules to accomodate your growing family during your entire life and beyond.

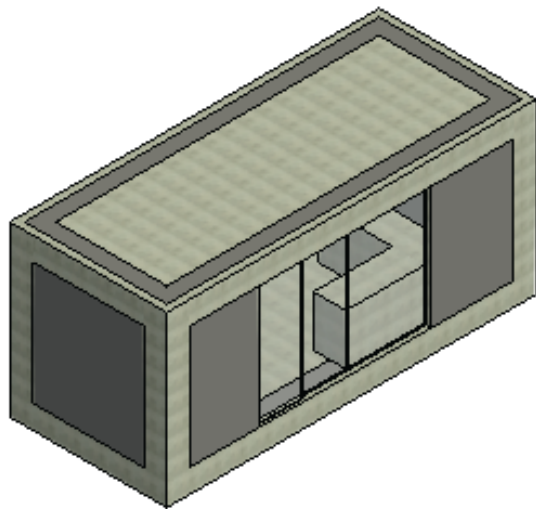
You have land? We build you a Home  
You Dream, we Deliver!

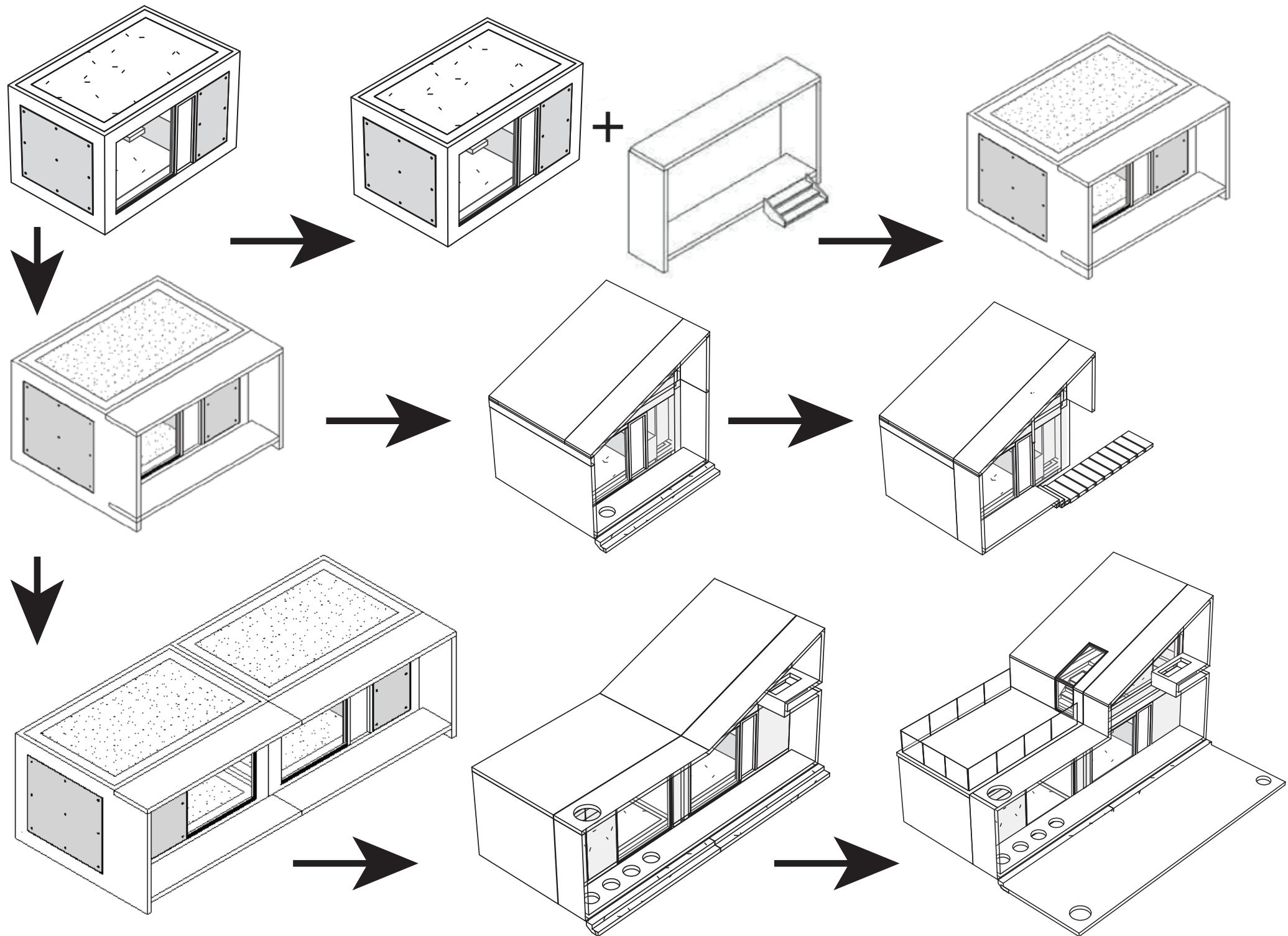


Lightweight concrete for passive house

Double Glazing

High Density Reinforced  
Concrete Chassis





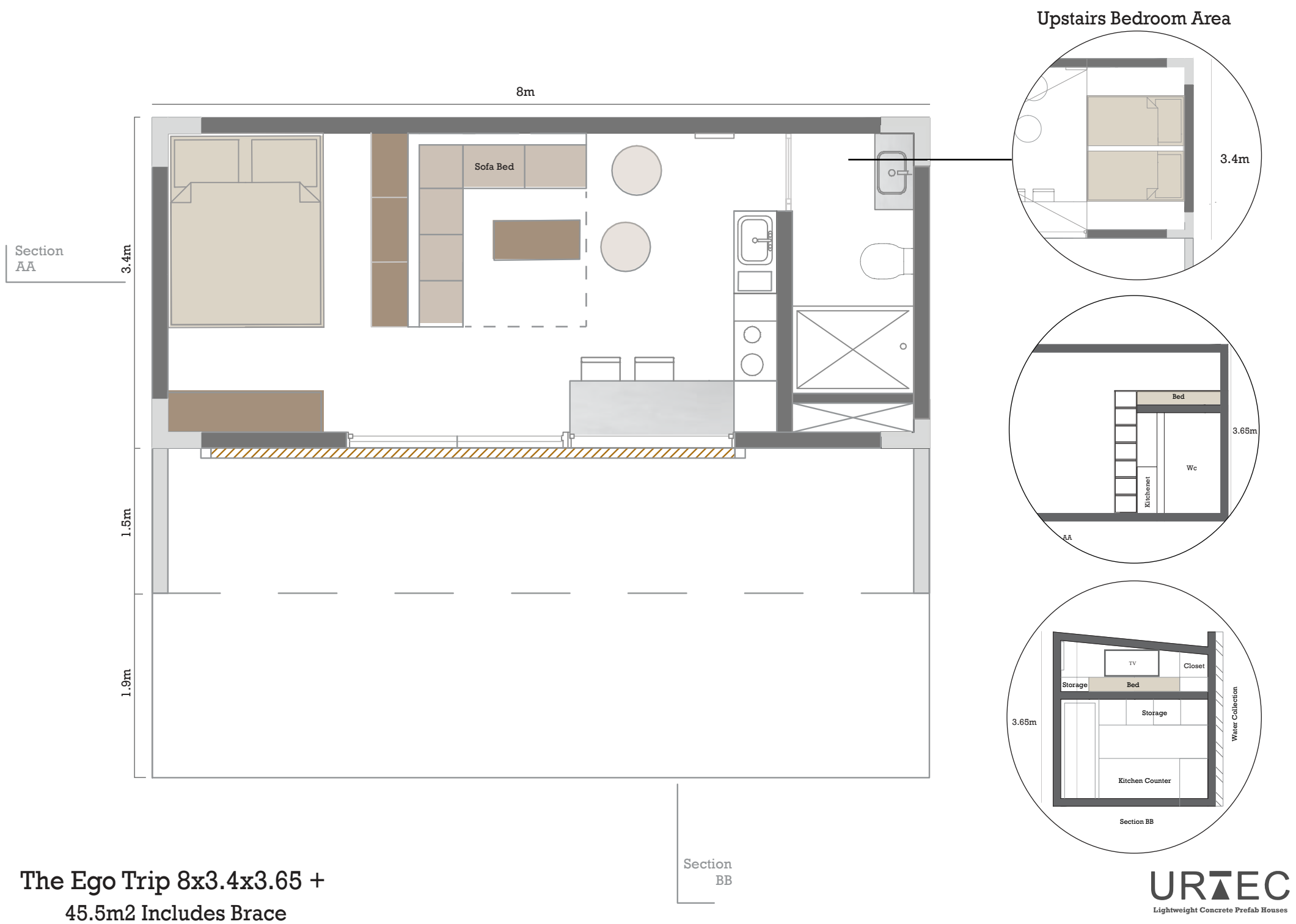




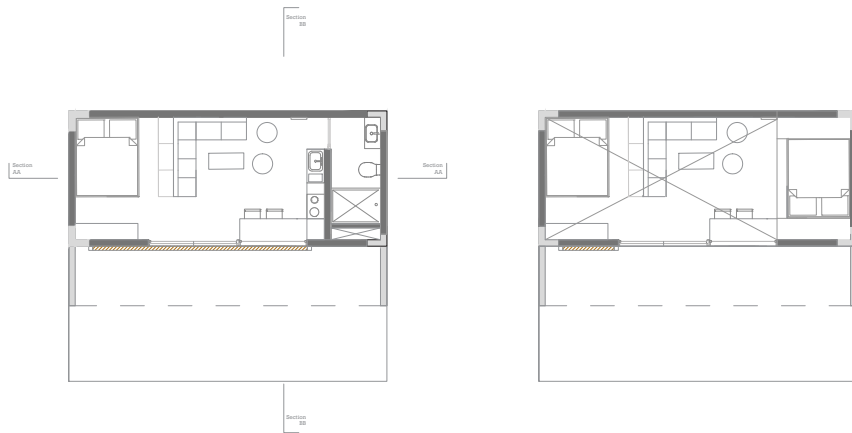
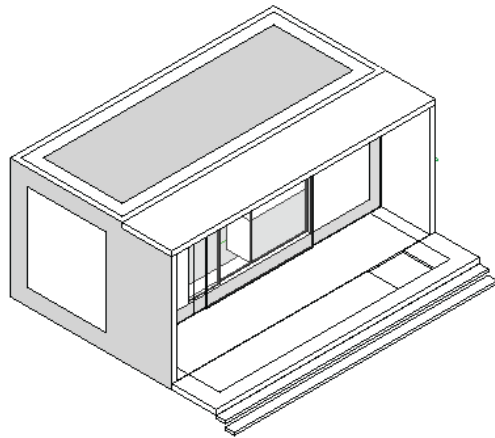




URTEC  
Lightweight Concrete Prefab Houses







The Ego Trip 8x3.4x3.65 +













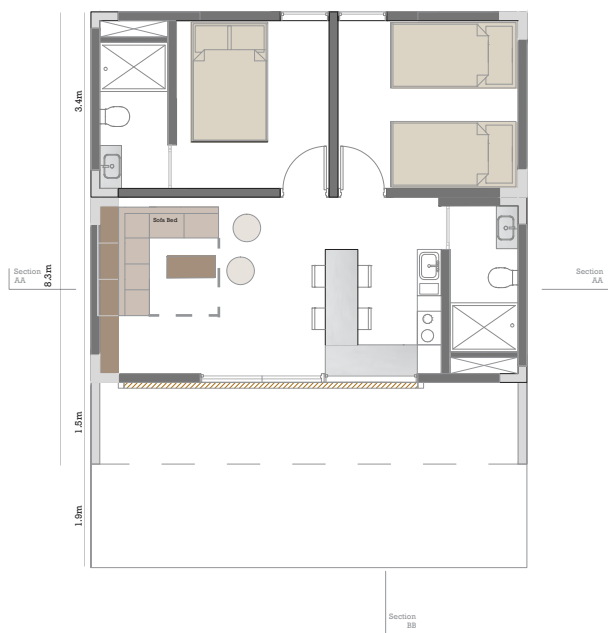
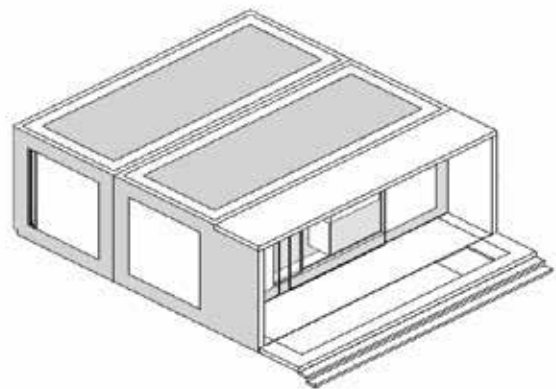






The Ego Trip Double 8x3.4x3.65 +  
91m2 Includes Brace







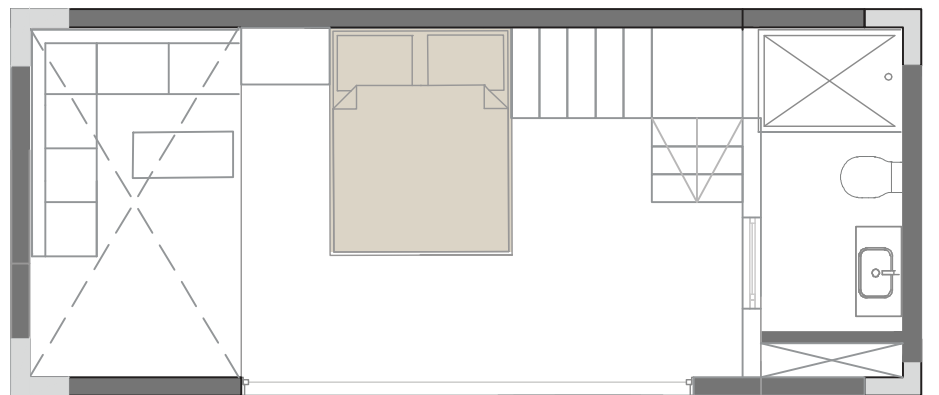
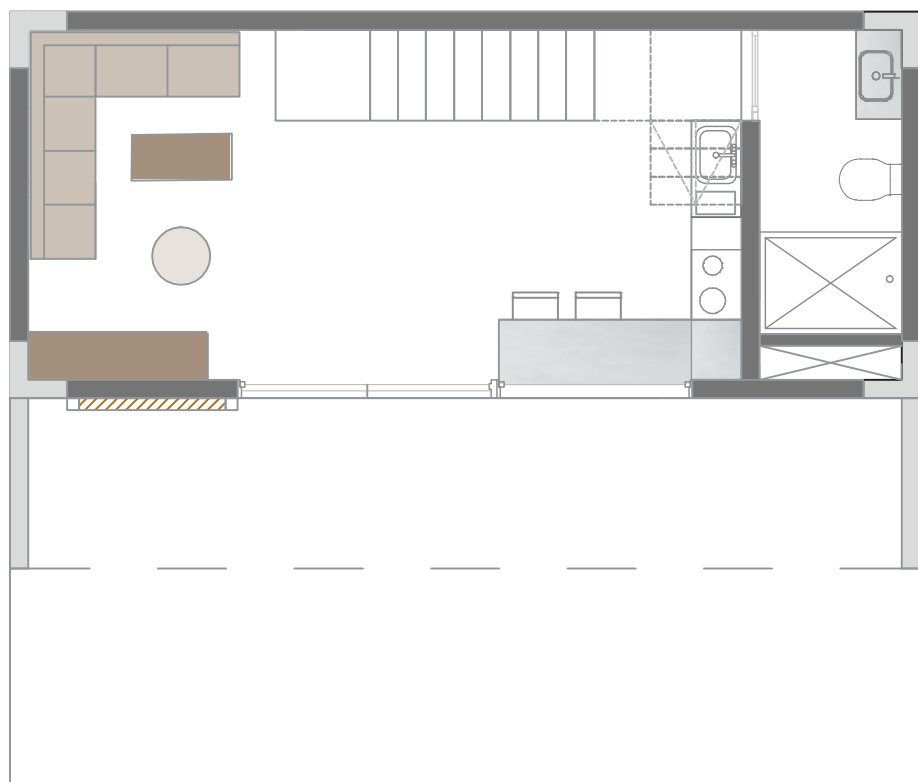


URTEC  
Lightweight Concrete Prefab Houses



URTEC  
Lightweight Concrete Prefab Houses

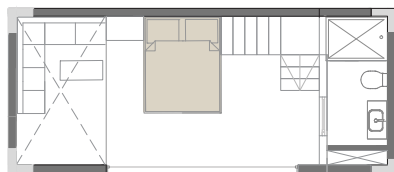
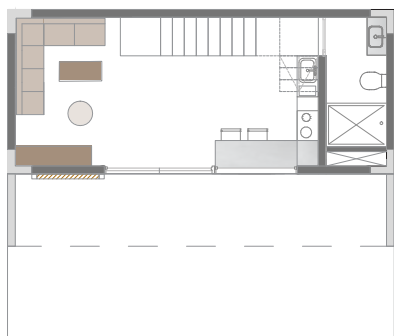
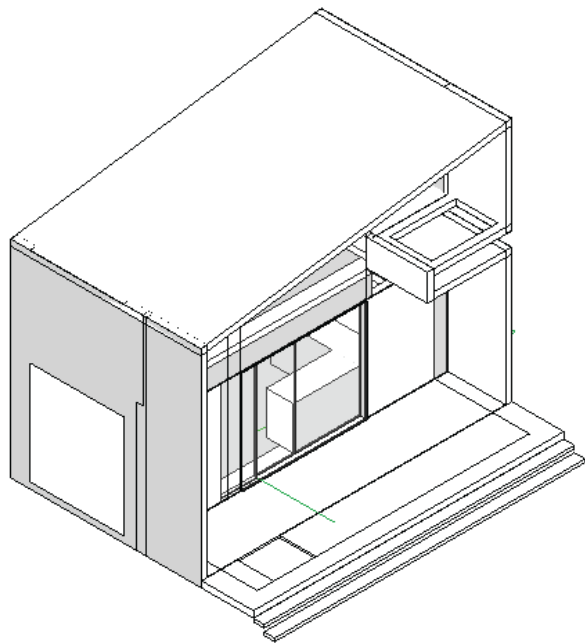




## 8x3.4 module with slanted roof

81.6m<sup>2</sup> Includes Brace & Deck

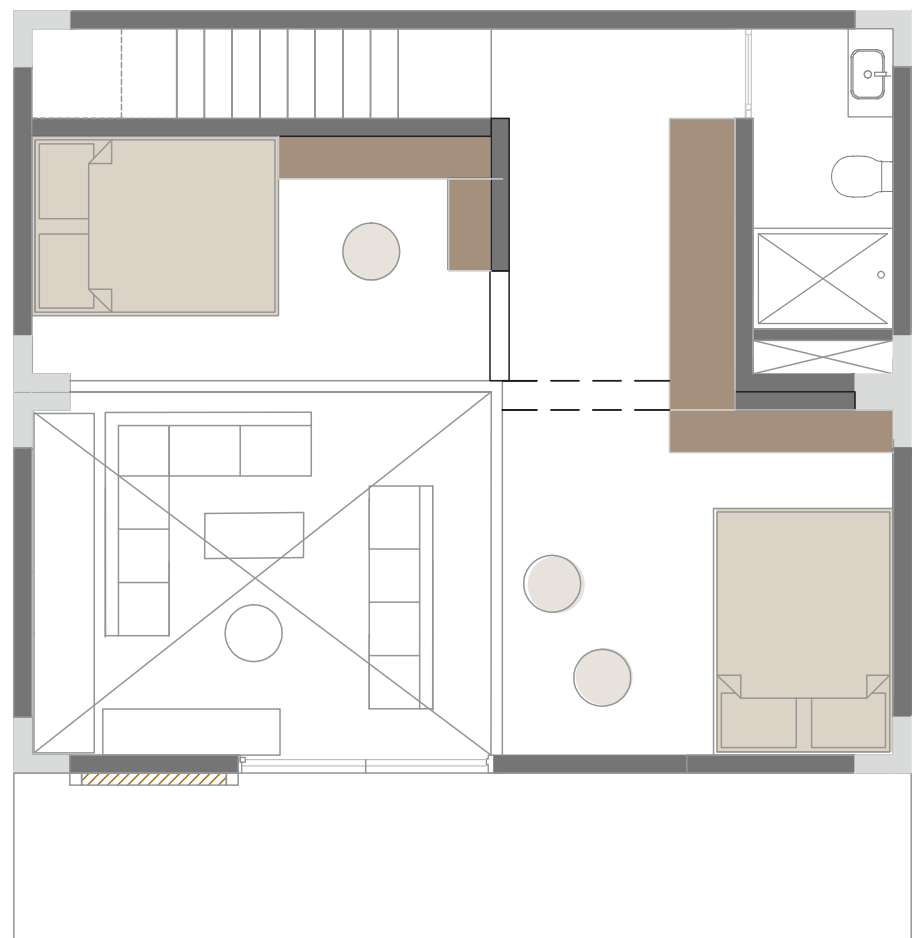
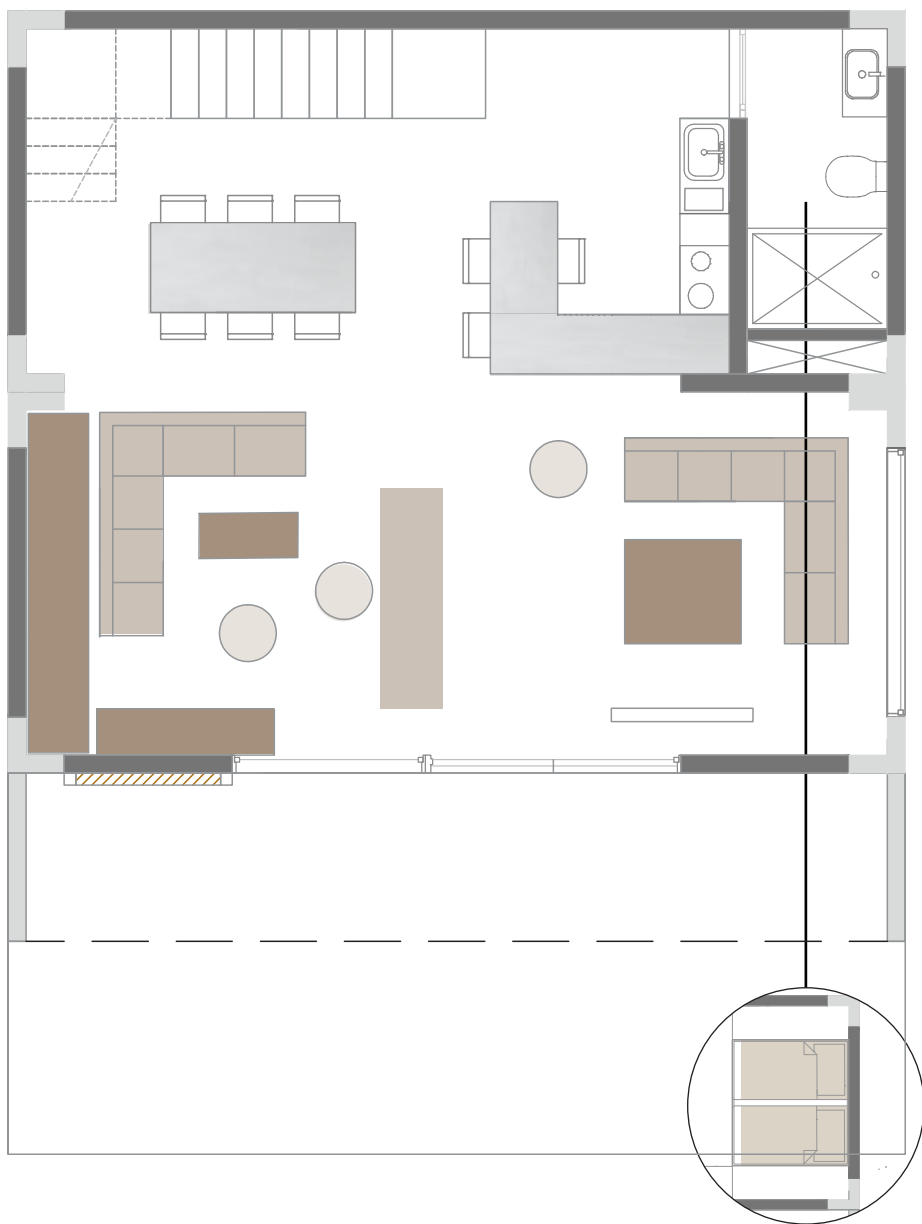




8x3.4 module with slanted roof



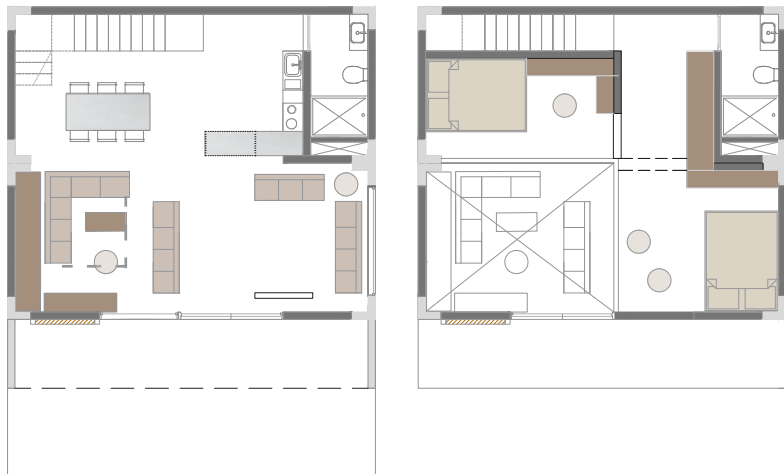
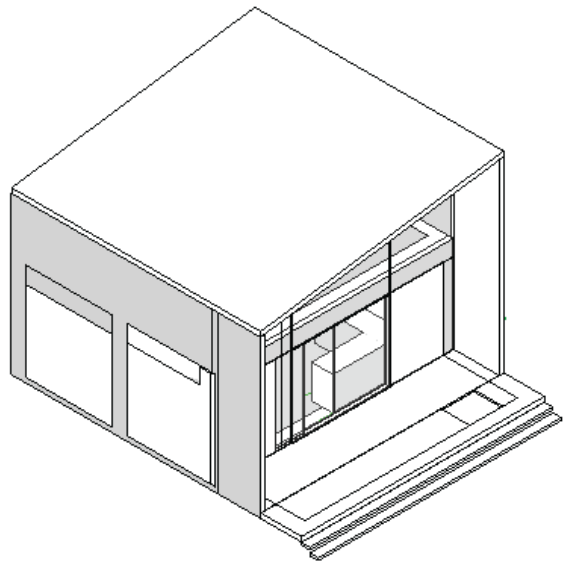




Upstairs Bedroom Area/Mezzanine

## Double 8x3.4 module with slanted roof





Double 8x3.4 module with slanted roof













# Moods













Kitchen Option 1



Kitchen Option 2



















